

### General Characteristics

Winter Survival*	2
Recovery	Very fast
Persistence	Very Good
Leaf to Stem Ratio	Excellent
Fall Dormancy**	4

\*Winter Survival-Lower number = more persistent variety

\*\*Fall Dormancy-Higher number = earlier it starts growing

in spring, later it grows in the fall

### Agronomic Features

Maturity	Med-Early
Forage Yield	Excellent
Dry Down	Very Good
Stress Tolerance	Excellent
Traffic Tolerance	Very Good
Standability	Excellent
Multileaf Expression	Very Good
Digestibility/Feed Value	Excellent

### Disease Resistance

Bacterial Wilt	HR
Verticillium Wilt	HR
Fusarium Wilt	HR
Anthracnose	HR
Phytophthora Root Rot	HR
Aphanomyces Root Rot	HR
Disease Resistance Index	35/35

### Recommended Seeding Rates

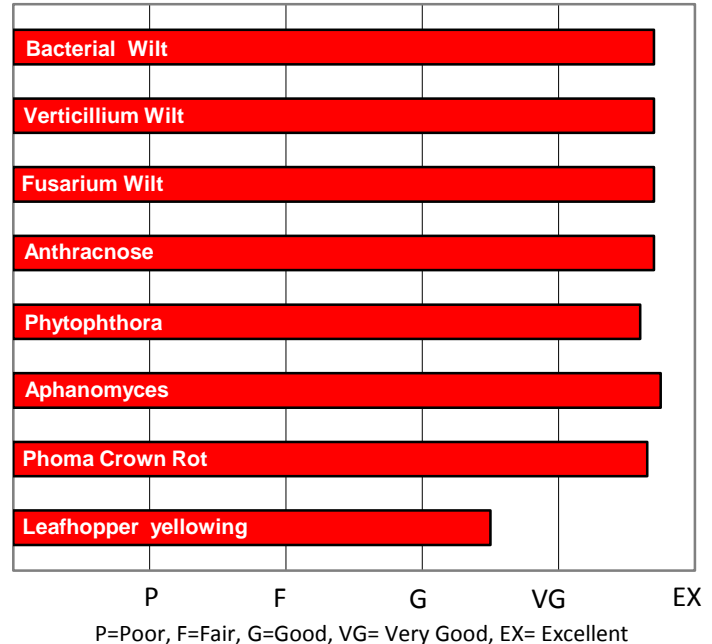
Alone (pure stand)	18-22
In a mix (grasses)	8-16



### Product Highlights

- New Stand-Life Genetics variety
- Fits 28-30 day cutting cycle
- Unmatched yield and quality
- Highly Resistant to Aphanomyces Race 2

### Pest Resistance Traits



*Aphanomyces root rot (races 1 & 2) will reduce yield in established alfalfa stands due to reduced root growth and poor nodulation which results in yellowed, stunted plants.*



**Eldora**  
APH 2 Resistance

**Competitor**  
30/35 DRI