



Product Highlights

- Round-up Ready
- Use on your most productive soils
- Excellent agronomic package
- High yield & high quality

General Characteristics

Winter Survival*	2
Recovery	Fast
Persistence	Excellent
Leaf to Stem Ratio	Very High
Fall Dormancy**	4

*Winter Survival-Lower number = more persistent variety

**Fall Dormancy-Higher number = earlier it starts growing in spring, later it grows in the fall

Agronomic Features

Maturity	Med-Early
Forage Yield	Very High
Dry Down	Very Good
Stress Tolerance	Excellent
Traffic Tolerance	Very Good
Standability	Very Good
Multileaf Expression	N/A
Digestability/Feed Value	Very Good

Disease Resistance

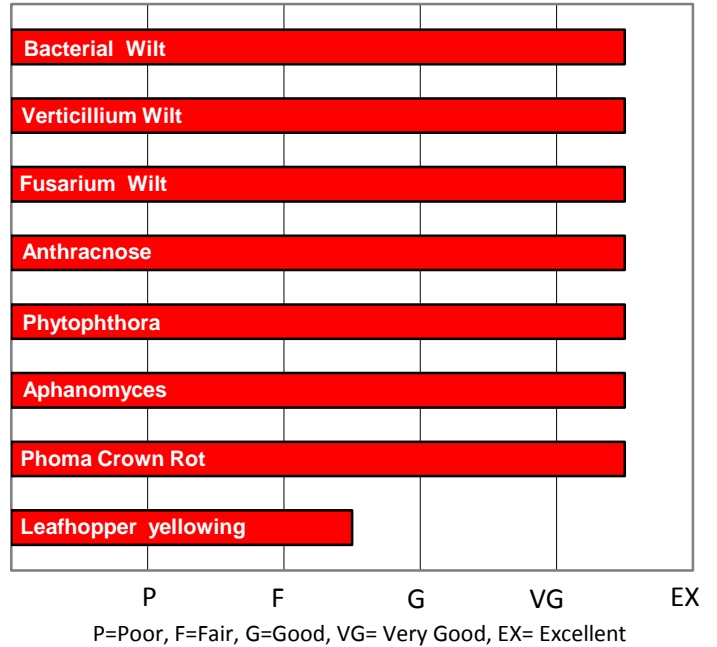
Bacterial Wilt	HR
Verticillium Wilt	HR
Fusarium Wilt	HR
Anthracnose	HR
Phytophthora Root Rot	HR
Aphanomyces Root Rot	HR
Disease Resistance Index	35/35

Recommended Seeding Rates

Alone (pure stand)	18-22
In a mix (grasses)	NA



Pest Resistance Traits



Yield per acre

Evansville, WI

Variety	Yield	% Yield of L-446RR
L-446RR	5.72	100%
55Q27	5.7	100%
6422Q	5.68	99%
WL 354HQ	5.65	99%
Barricade	5.39	94%
SLT	5.38	94%
HybriForce 3400	5.38	94%

Forage Quality

Variety	%CP	Milk/acre	L-446RR Advantage \$20/cwt.
L-446RR	20	24,787	—
HybriForce 440	19.9	24,253	\$106
54V09	19.5	23,191	\$319.20
PGI 437	19.7	21,633	\$630.08

Yield 2 Year Comparison

Competitor	Yield L-446 RR % of Competitor	L-446RR Advantage \$150/DM Ton
55V12	104	\$93
HybriForce 2400	107	\$190.50
WL 357HQ	108	\$198.00
HybriForce 440	110	\$238.50

Genuity® Roundup Ready® Alfalfa seed is available for sale and distribution by authorized Seed Companies or their dealers for use in the United States only. This seed may not be planted outside of the United States, or for the production of seed, or sprouts.

Monsanto Company is a member of Excellence Through Stewardship® (ETS). Monsanto products are commercialized in accordance with ETS Product Launch Stewardship Guidance, and in compliance with Monsanto's Policy for Commercialization of Biotechnology-Derived Plant Products in Commodity Crops. This product has been approved for import into key export markets with functioning regulatory systems. Any crop or material produced from this product can only be exported to, or used, processed or sold in countries where all necessary regulatory approvals have been granted. **Do not export Genuity® Roundup Ready® Alfalfa seed or crop, including hay or hay products, to China pending import approval.** It is a violation of national and international law to move material containing biotech traits across boundaries into nations where import is not permitted. Growers should talk to their grain handler or product purchaser to confirm their buying position for this product. Excellence Through Stewardship® is a registered trademark of Biotechnology Industry Organization.

ALWAYS READ AND FOLLOW PESTICIDE LABEL DIRECTIONS. Roundup Ready® crops contain genes that confer tolerance to glyphosate, the active ingredient in Roundup® brand agricultural herbicides. Roundup® brand agricultural herbicides will kill crops that are not tolerant to glyphosate. Genuity Design®, Genuity Icons, Genuity®, Roundup Ready® and Roundup® are trademarks of Monsanto Technology LLC. ©2013 Monsanto Company.

L LEGACY SEEDS INC
INTEGRITY IN EVERY BAG

290 Depot Street, Scandinavia, WI 54977
1-715-467-2555
www.legacyseeds.com

