



Entree RL

Alfalfa

General Characteristics

| | |
|--------------------|-----------|
| Winter Survival* | 1.8 |
| Recovery | Very fast |
| Persistence | Very Good |
| Leaf to Stem Ratio | Excellent |
| Fall Dormancy** | 4.2 |

*Winter Survival-Lower number = more persistent variety

**Fall Dormancy-Higher number = earlier it starts growing in spring, later it grows in the fall

Agronomic Features

| | |
|--------------------------|-----------|
| Maturity | Med-Early |
| Forage Yield | Excellent |
| Dry Down | Very Good |
| Stress Tolerance | Excellent |
| Traffic Tolerance | Very Good |
| Standability | Excellent |
| Multileaf Expression | Excellent |
| Digestibility/Feed Value | Excellent |

Disease Resistance

| | |
|--------------------------|-------|
| Bacterial Wilt | HR |
| Verticillium Wilt | HR |
| Fusarium Wilt | HR |
| Anthracnose | HR |
| Phytophthora Root Rot | HR |
| Aphanomyces Root Rot | HR |
| Disease Resistance Index | 33/35 |

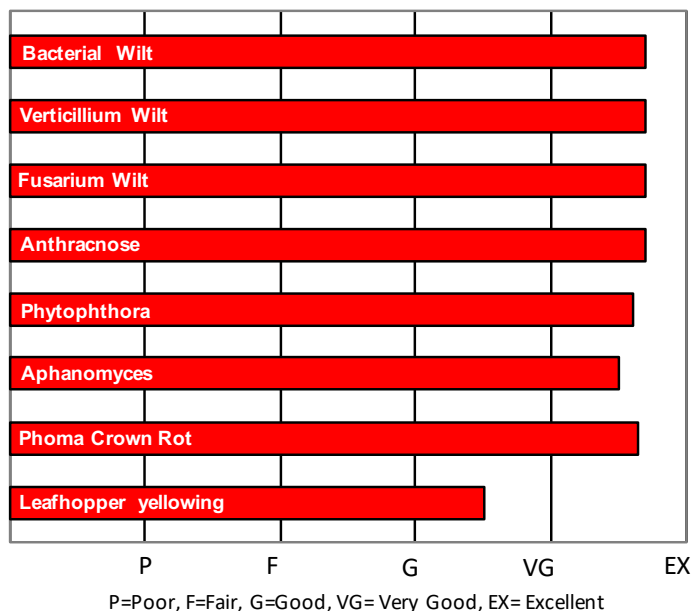
Recommended Seeding Rates

| | |
|--------------------|-------|
| Alone (pure stand) | 18-22 |
| In a mix (grasses) | 8-16 |

Product Highlights

- Reduced Lignin for High Digestability
- Fits extended cutting cycles maintaining Quality
- Excellent Quality with High Yield Potential
- High RFQ, NDFd and TTNDFD forage scores

Pest Resistance Traits



Aphanomyces root rot (races 1 & 2) will reduce yield in established alfalfa stands due to reduced root growth and poor nodulation which results in yellowed, stunted plants.

